

# **ROSBACK COMPANY**

## **Three Spindle Drill Models 370 & 371**



### **Designed for Short *and* Long Runs**

- **Convenient and Affordable Table Top Format**
- **Powerful 3/4 HP Motor Handles Big Jobs**
- **Automatic Chip Ejection and Collection**
- **Accurate and Dependable Performance**

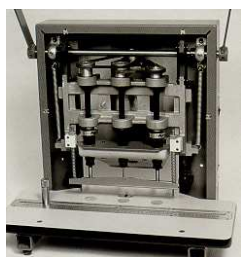
Rosback has provided world-class bindery solutions since 1881. Rugged, High quality construction is your advantage when you choose Rosback equipment. These versatile and dependable Rosback three-spindle drills deliver increased drilling capacity and flexibility to a variety of users, including commercial, in-plant and quick printers; offices; churches; schools; government facilities; and mailrooms.

#### PERFORMANCE FEATURES:

- 2-Inch Stock Capacity
- Comfortable Hand Lever Operation
- Rugged Construction
- Sealed Bearings
- Locking Back Gage
- Vertical Head Adjustment
- Fast Setup and Change-Over
- Automatic Chip Ejection
- Heavy-Duty 3/4 HP Motor



The Model 371 paper drill converts easily to single-hole drilling, and the **Self-Locking Table Stops** expand its capability to almost any hole patterns.



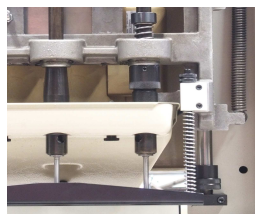
Drill a full **2-Inches** of stock in a single stroke with speed and accuracy. A **Locking Back Gage** make margin adjustments quick and easy. The **Heavy-duty 3/4-hp motor** powers the spindles with a poly-v-belt drive.

#### 370/371 STANDARD EQUIPMENT:

- 3 – 1/4" Paper Drills
- 3 – Drill Blocks
- 1 – Clean-out Pin
- 1 – Drift
- 1 – Drift Lever
- 1 – Drill Lubricant Stick
- 1 – Tool Kit



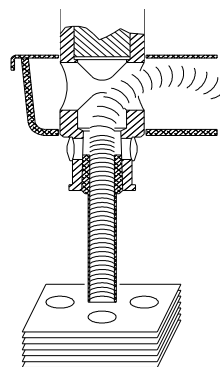
A **Large Table** provides ample work space. A **Floor Stand and Table Extensions** are available for added convenience.



A **Simple Vertical Adjustment** allows drills of different lengths to be used. The high compression **"Hold-Down" Stripper Bar** along with **Fixed 4-1/4" (108mm) Drill Spacing** maintain accuracy, and eliminate spacing errors.

#### OPTIONS

- Drill Stand #350-A-014  
Fits both 370 and 371
- Table Extensions  
#350-A-015 (370 only)



**Automatic Chip Ejection** directly into an enclosed removable chip tray.

#### AVAILABLE DRILLS AND ASSESSORIES :

- 1/8 dia. (3.2mm) #S-1309
- 5/32 dia. (4mm) #S-1308
- 3/16 dia. (4.8mm) #S-1307
- 7/32 dia. (5.6mm) #S-1306
- 1/4 dia. (6.3mm) #S-1268
- 9/32 dia. (7.1mm) #S-1304
- 5/16 dia. (7.9mm) #S-1303
- 11/32 dia. (8.7mm) #S-1302
- 3/8 dia. (9.5mm) #S-1301
- 13/32 dia. (10.3mm) #S-1573
- 7/16 dia. (11.1mm) #S-1574
- 1/2 dia. (12.7mm) #S-1575
- Drill Sharpener #S-1295
- Drill Blocks #350-013
- Drill Lubricant #S-1294

370/371 PAPER DRILL SPECIFICATIONS		
	370	371
<b>Drilling Specifications</b>		
Max Capacity*	2" (51 mm)	2" (51 mm)
Max Back Margin	2-1/2" (63 mm)	1-1/4" (32 mm)
Max Side Margin	12" (30 cm)	18-1/4" (46 cm)
Fixed Distance Between Holes	4-1/4" (108 mm)	4-1/4" (108 mm)
<b>Dimensions</b>		
Depth	21" (53 cm)	21" (53 cm)
Width	28" (71 cm)	39-3/4" (101 cm)
Height	38" (97 cm)	38" (97 cm)
<b>Weights</b>		
Net	140 lbs. (64 kg)	150 lbs. (68 kg)
Shipping	159 lbs. (73 kg)	169 lbs. (77 kg)
Export	220 lbs. (100 kg)	235 lbs. (107 kg)
<b>Electrical</b>		
Standard*	120 vac, 50/60 Hz, 1Ph, 15 amp	
Optional	220 vac, 50/60 Hz, 1Ph, 15 amp	
Motor	3/4 Hp 10.6 amps	

\*Smaller drill diameters have less capacity

*Design Specifications Subject To Change Without Notice*

#### ROSBACK CO.

125 HAWTHORNE AVE., ST. JOSEPH, MI 49085 USA

Phone: (269) 983-2582 \* Fax: (269) 983-2516

Internet: www.rosbackcompany.com \* E-mail: sales@rosbackcompany.com